



CD37 Polyclonal Antibody

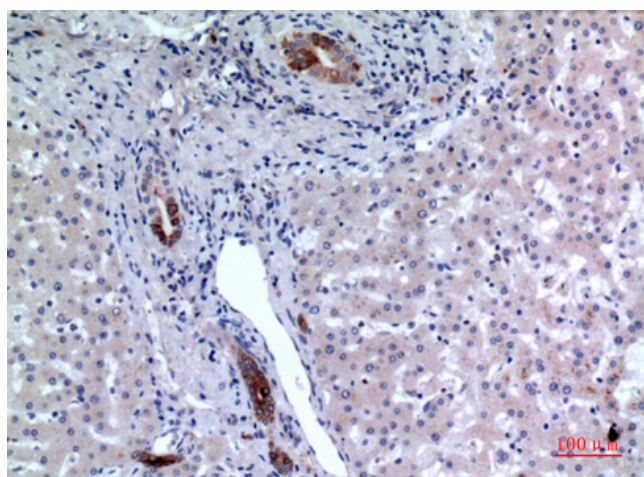
Catalog No	YP-Ab-14026
Isotype	IgG
Reactivity	Human;Rat;Mouse;
Applications	WB;IHC;IF;ELISA
Gene Name	CD37
Protein Name	Leukocyte antigen CD37
Immunogen	The antiserum was produced against synthesized peptide derived from the Internal region of human CD37. AA range:81-130
Specificity	CD37 Polyclonal Antibody detects endogenous levels of CD37 protein.
Formulation	Liquid in PBS containing 50% glycerol, 0.5% BSA and 0.02% sodium azide.
Source	Polyclonal, Rabbit,IgG
Purification	The antibody was affinity-purified from rabbit antiserum by affinity-chromatography using epitope-specific immunogen.
Dilution	WB: 1/500 - 1/2000. IHC-p: 1/100-1/300. ELISA: 1/20000.. IF 1:50-200
Concentration	1 mg/ml
Purity	≥90%
Storage Stability	-20°C/1 year
Synonyms	CD37; TSPAN26; Leukocyte antigen CD37; Tetraspanin-26; Tspan-26; CD37
Observed Band	30kD
Cell Pathway	Membrane; Multi-pass membrane protein.
Tissue Specificity	B-lymphocytes.
Function	similarity:Belongs to the tetraspanin (TM4SF) family.,tissue specificity:B-lymphocytes.,
Background	The protein encoded by this gene is a member of the transmembrane 4 superfamily, also known as the tetraspanin family. Most of these members are cell-surface proteins that are characterized by the presence of four hydrophobic domains. The proteins mediate signal transduction events that play a role in the regulation of cell development, activation, growth and motility. This encoded protein is a cell surface glycoprotein that is known to complex with integrins and other transmembrane 4 superfamily proteins. It may play a role in T-cell-B-cell interactions. Alternate splicing results in multiple transcript variants encoding different isoforms. [provided by RefSeq, Jul 2008],
matters needing attention	Avoid repeated freezing and thawing!

**Usage suggestions**

This product can be used in immunological reaction related experiments. For more information, please consult technical personnel.

Products Images

Western Blot analysis of HeLa cells using CD37 Polyclonal Antibody. Secondary antibody(catalog#:RS0002) was diluted at 1:20000



Immunohistochemical analysis of paraffin-embedded human-liver, antibody was diluted at 1:100